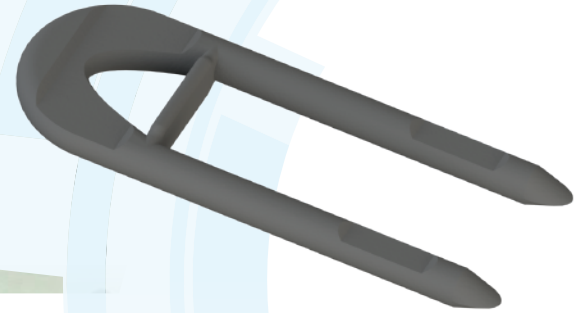


# DP40

## Double Prong



|   | USA  | International  |
|---|--|----------------|
| Tie Length:                             | 4.75 in  | 121 mm         |
| Embedment Depth:                        | (head) 1.5 in<br>(tip) 1.75 in   | 38 mm<br>44 mm |
| Diameter Through Foam:                  | 2 x 0.354 in   | 2 x 9 mm       |
| Insulation Thickness:                   | 1.5 in   | 40 mm          |
| Structural Wythe Thickness:             | minimum 2 in   | minimum 50 mm  |
| Fascia Wythe Thickness:                 | 2-4 in   | 50-100 mm      |
| Ultimate Tensile/Pullout <sup>1</sup> : | 1,269 lb   | 5.65 kN        |
| Ultimate Panel Shear Capacity/Tie:      | 706 lb   | 3.14 kN        |
| Alkaline Resistance:                    | Excellent <sup>2</sup>   |                |
| Impact Resistance:                      | Excellent <sup>3</sup>   |                |
| Fire Performance:                       | Resist 300-lb tension load for over 90 minutes when fire tested per Section 7.4.3 of ASTM E1512-01 |                |
| Thermal Conductivity:                   | 2.1 Btu-in/hr-ft <sup>2</sup> °F<br>0.30 W/m <sup>2</sup> K  |                |

1 Concrete  $f'_c = 3,000$  psi

2 99.1% retained strength after 3,000 hours of conditioning in pH12 solution, Testing of HK Composite Low Conductivity Ties to ICC-ES AC308 Criteria, Report Number: ESP014387P.1, March 5, 2014, Element Materials Technology, 662 Cromwell Avenue, St. Paul, MN 55114-1720 USA

3 The un-notched Izod Impact testing: 21 ft-lb/in (1100 J/m)

DISCLAIMER OF LIABILITY: It is the sole responsibility of the contractor to install the HK ties in accordance with the published instructions. It is also the responsibility of the owner to confirm proper industry standards and methods are used by contractors, engineers, suppliers, and all others hired by the owner. The presence of an HK Composites representative at the job site does not relieve the contractor from the responsibility to follow published installation instructions. HK COMPOSITES IS NOT RESPONSIBLE FOR ANY LIABILITY RESULTING FROM A FAILURE TO FOLLOW THESE INSTRUCTIONS. Our recommendations should not be taken as a construction specification nor inducements to infringe on any patent or violate any law, safety code or insurance regulation

U.S. Patents D804,288 S 10,000,928 B2 5,519,973 5,830,399 5,987,834 5,809,723 6,112,491 | Canadian Patent 2,187,284 | Australian Patent 687,367 | European Patent 0745265 | Mexican Patent 201,274 | Chinese Patent ZL 95192498.2 | Japanese Patent 3,604,14

© Copyright 2023 HK Composites. All rights reserved. Published 08/2023

Made in the USA 

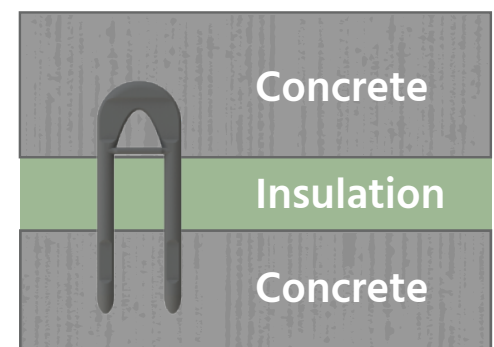
## Low-Conductivity Wall Tie

### APPLICATION


Connects tilt-up and precast insulated concrete sandwich panels with maximum thermal performance.

### INSTALLATION

Review DP Tie Installation Instructions before using



### CONTACT US

 Toll-Free: 1-800-430-6316  
International: 801-763-0907

 926 S Auto Mall Dr, Ste 4  
American Fork, UT 84003

 [hkties.com](http://hkties.com)

# HK